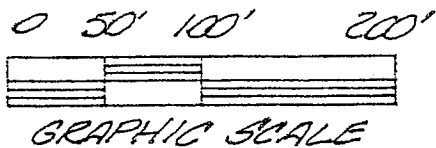
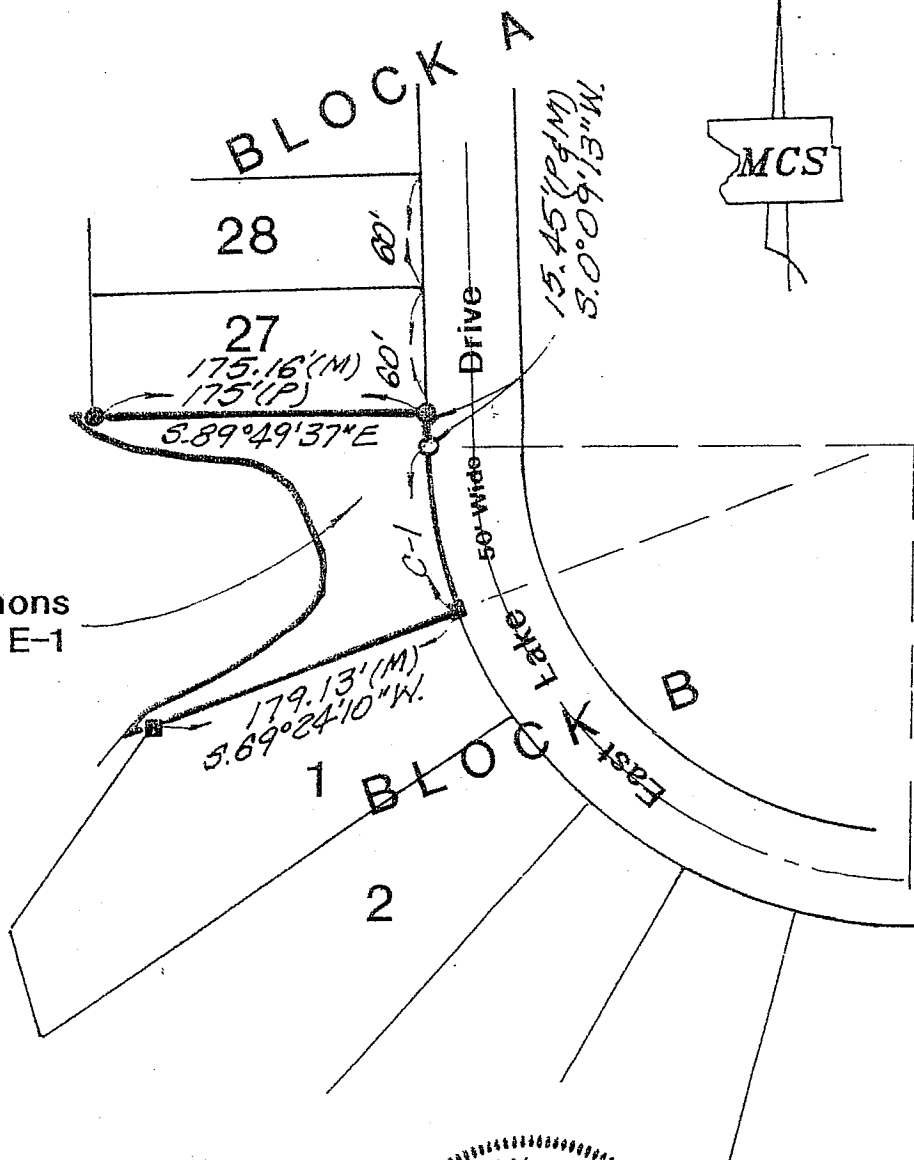


Part of "Blocks A & B" of "Dunlap Lake Subdivision"
 (As recorded in P.Bk.21/P.72)
 in the S.E.1/4 of Sec.12-Twp.4 N.-R.8 W. of the 3rd P.M.,
 Madison County, IL
 Known as 'Commons Area E-1'



DUNLAP LAKE

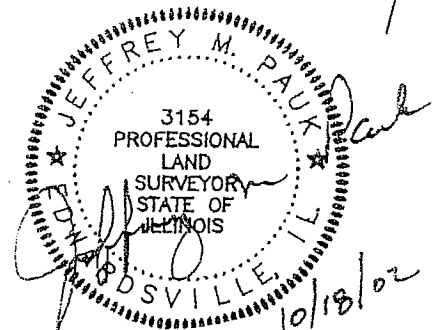
Commons Area E-1



LOT LINE
 C-1 CURVE DATA

R=245.31'
 A=92.10'(M)
 92.26'(P)
 C=91.60'
 C.BRG=3.10°13'19"E

BASIS OF BEARINGS: Grid North, Illinois State Plane
 Coordinate System, West Zone, from astronomic observation



Madison County Surveyors

140A North Main Street
 Edwardsville, IL 62025
 (618) 692-4414
 Fax (618) 692-4404

EXHIBIT "A"

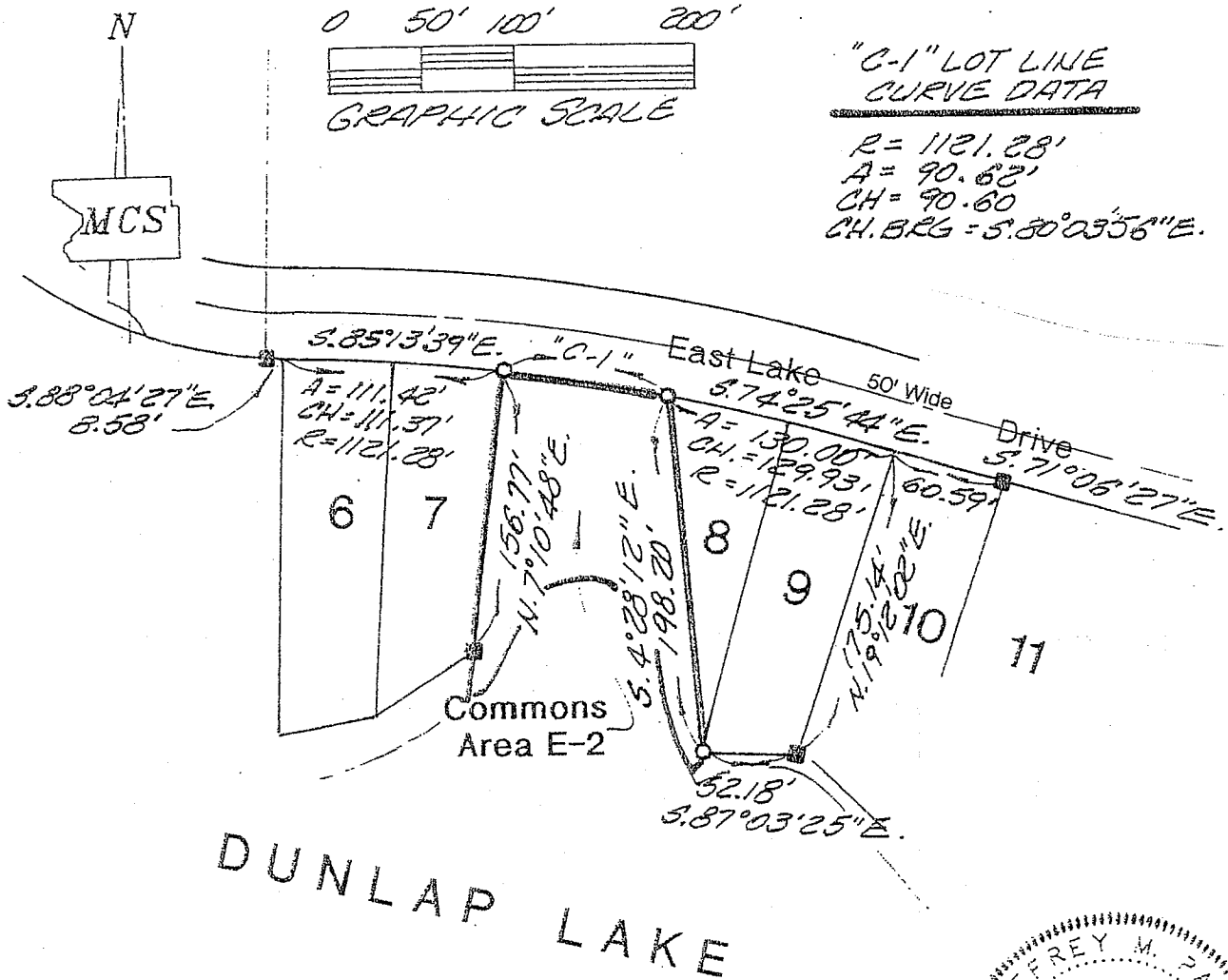
Dunlap Lake Property Owners Association
 1409 Gerber Road
 Edwardsville, IL 62025

DN. BY: JMW
 CX. BY: JMP
 JOB NO:
 02184

Part of "Block B" of "Dunlap Lake Subdivision"

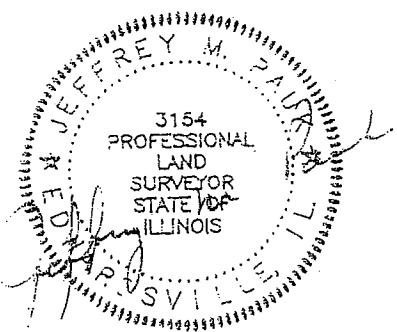
(As recorded in P.Bk.21/P.72)

in the S.E.1/4 of Sec.12-Twp.4 N.-R.8 W. of the 3rd P.M.,
Madison County, IL
Known as 'Commons Area E-2'



"C-1" LOT LINE CURVE DATA
 $R = 1121.28'$
 $A = 90.62'$
 $CH = 90.60$
 $CH. BRG = S.20^{\circ}03'56'' E.$

DUNLAP LAKE



BASIS OF BEARINGS: Grid North, Illinois State Plane Coordinate System, West Zone, from astronomic observation

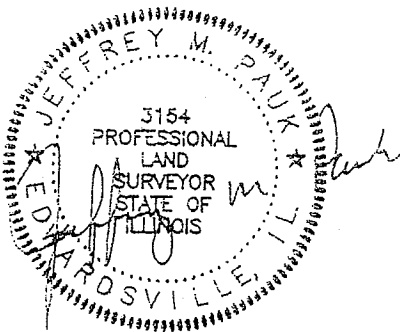
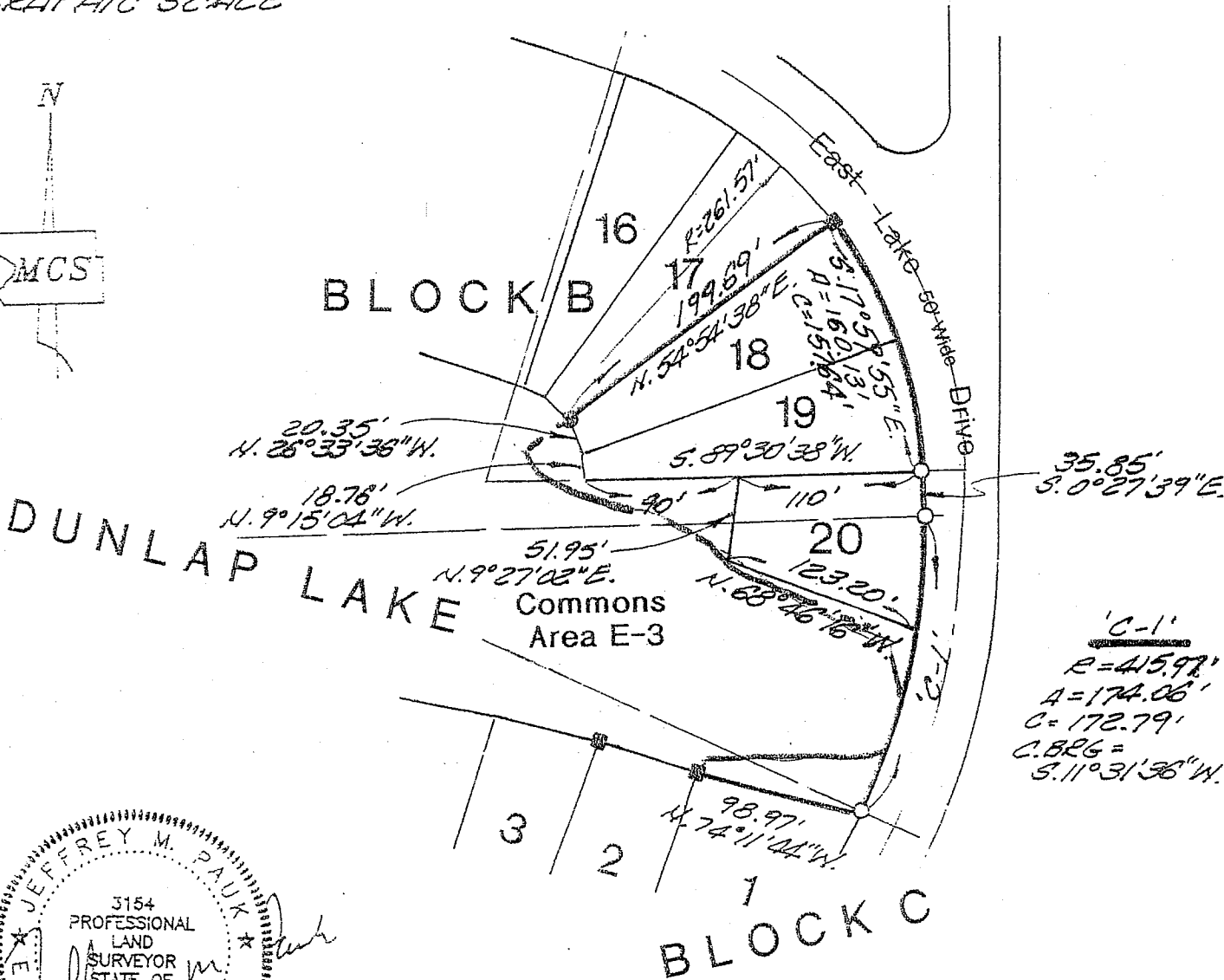
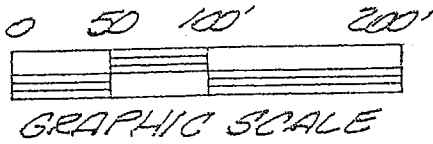
Madison County Surveyors
 140A North Main Street
 Edwardsville, IL 62025
 (618) 692-4414
 Fax (618) 692-4404

EXHIBIT "A"
 Dunlap Lake Property Owners Association
 1409 Gerber Road
 Edwardsville, IL 62025

DN BY JW
 DK BY JMP
 JOB NO:
 02184

Part of "Blocks B & C" of "Dunlap Lake Subdivision"
 (As recorded in P.Bk.21/P.72)
 in the S.W.1/4 of Sec.7-Twp.4 N.-R.7 W. of the 3rd P.M.,
 Madison County, IL

Known as 'Commons Area E-3'



BASIS OF BEARINGS: Grid North, Illinois State Plane
 Coordinate System, West Zone, from astronomic observation

Madison County Surveyors
 140A North Main Street
 Edwardsville, IL 62025
 (618) 692-4414
 Fax (618) 692-4404

EXHIBIT "A"

Dunlap Lake Property Owners Association
 1409 Gerber Road
 Edwardsville, IL 62025

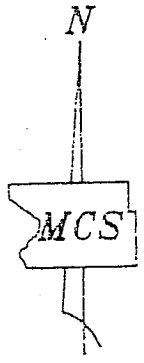
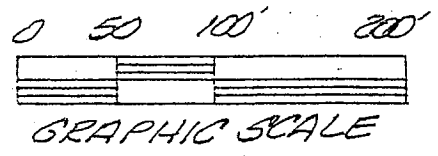
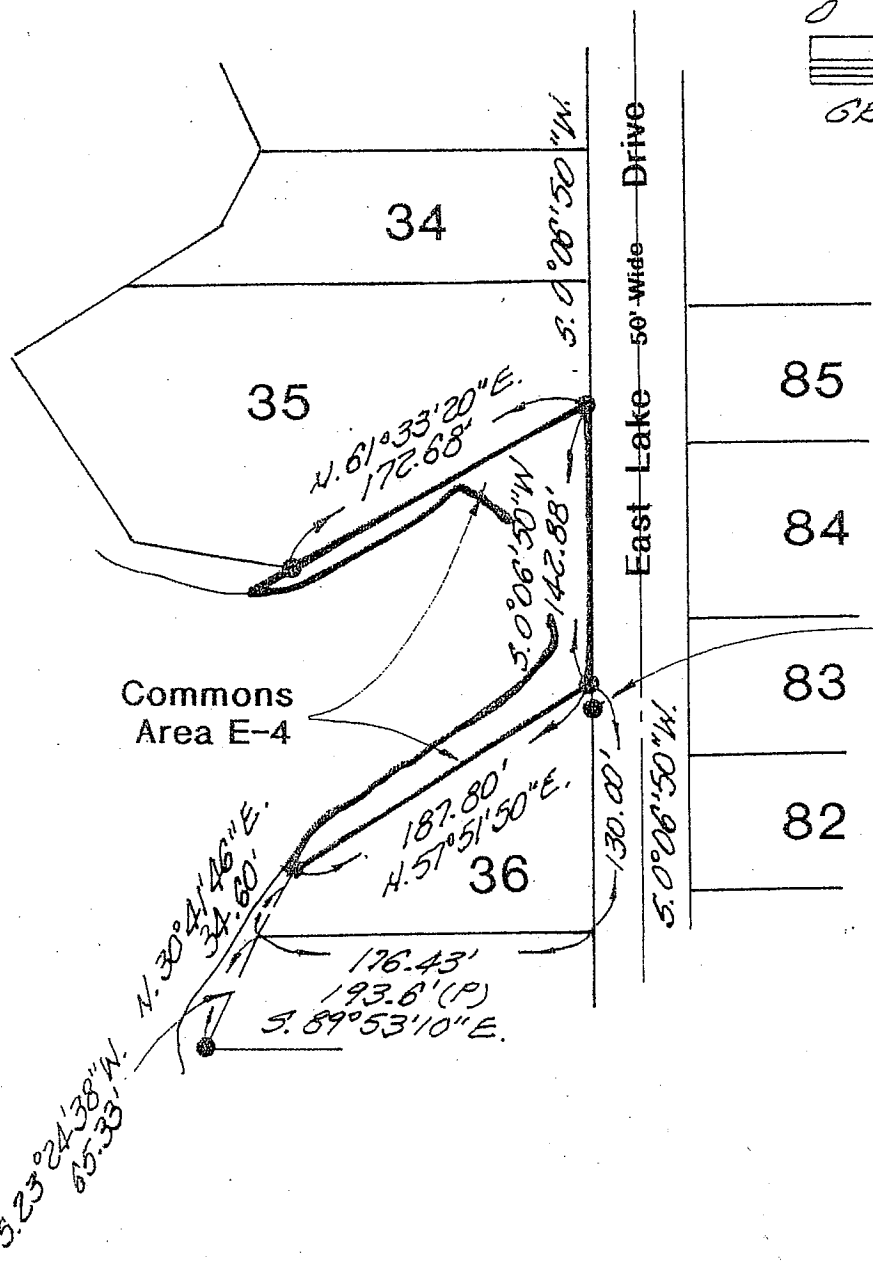
DN BY JWN
 CX BY JMP
 JOB NO:
 02148

Part of "Block C" of "Dunlap Lake Subdivision"

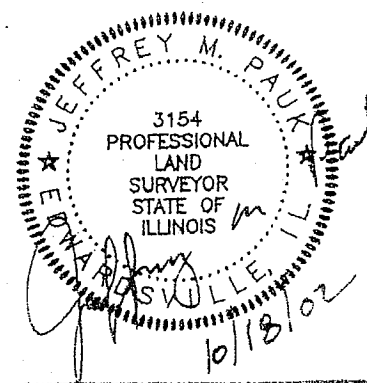
(As recorded in P.Bk.21/P.72)

in the N.W.1/4 of Sec.18-Twp.4 N.-R.7 W. of the 3rd P.M.,
Madison County, IL
Known as 'Commons Area E-4'

DUNLAP LAKE



OLD IRON PIPE
10.5' SOUTH



Madison County Surveyors

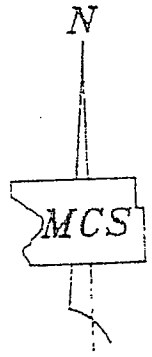
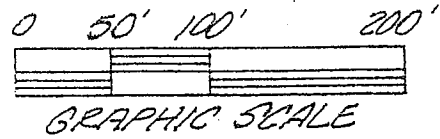
140A North Main Street
Edwardsville, IL 62025
(618) 692-4414
Fax (618) 692-4404

EXHIBIT "A"

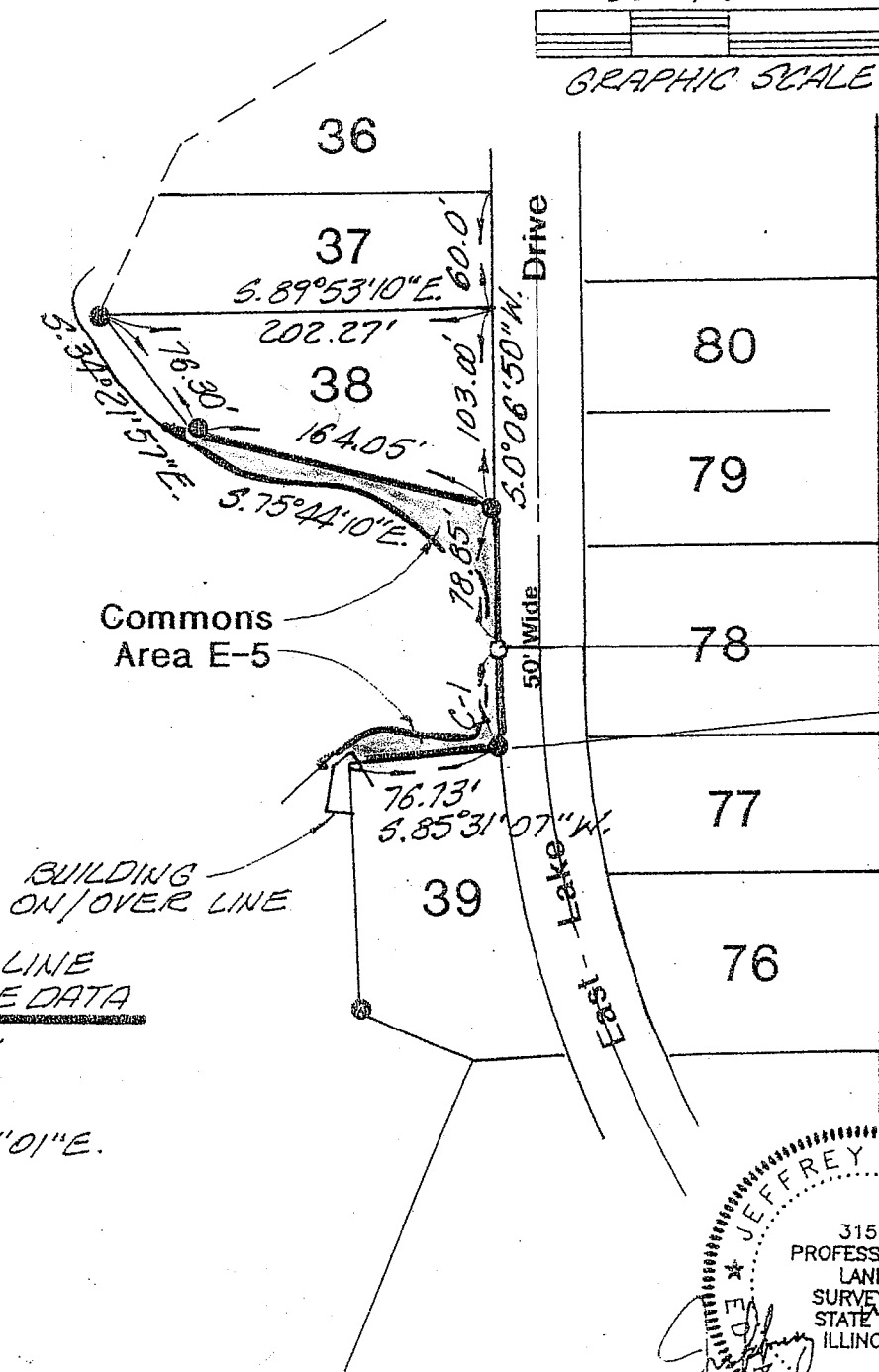
Dunlap Lake Property Owners Association
1409 Gerber Road
Edwardsville, IL 62025

DN. BY: J.W.
CK. BY: J.M.P.
JOB NO:
02184

Part of "Block C" of "Dunlap Lake Subdivision"
 (As recorded in P.Bk.21/P.72)
 in the N.W.1/4 of Sec.18-Twp.4 N.-R.7 W. of the 3rd P.M.,
 Madison County, IL
 Known as 'Commons Area E-5'

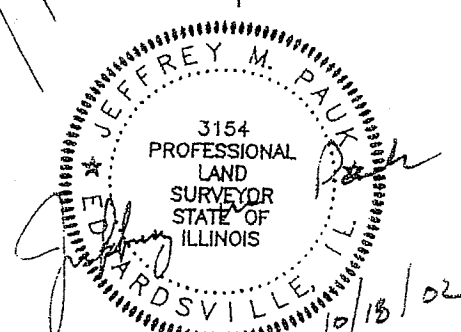


DUNLAP LAKE



LOT LINE
C-1 CURVE DATA

R = 598.14'
 A = 47.97'
 C = 47.96'
 C.BRG = S.2°11'01"E.



BASIS OF BEARINGS: Grid North, Illinois State Plane
 Coordinate System, West Zone, from astronomic observation

Madison County Surveyors

140A North Main Street
 Edwardsville, IL 62025
 (618) 692-4414
 Fax (618) 692-4404

EXHIBIT "A"

Dunlap Lake Property Owners Association
 1409 Gerber Road
 Edwardsville, IL 62025

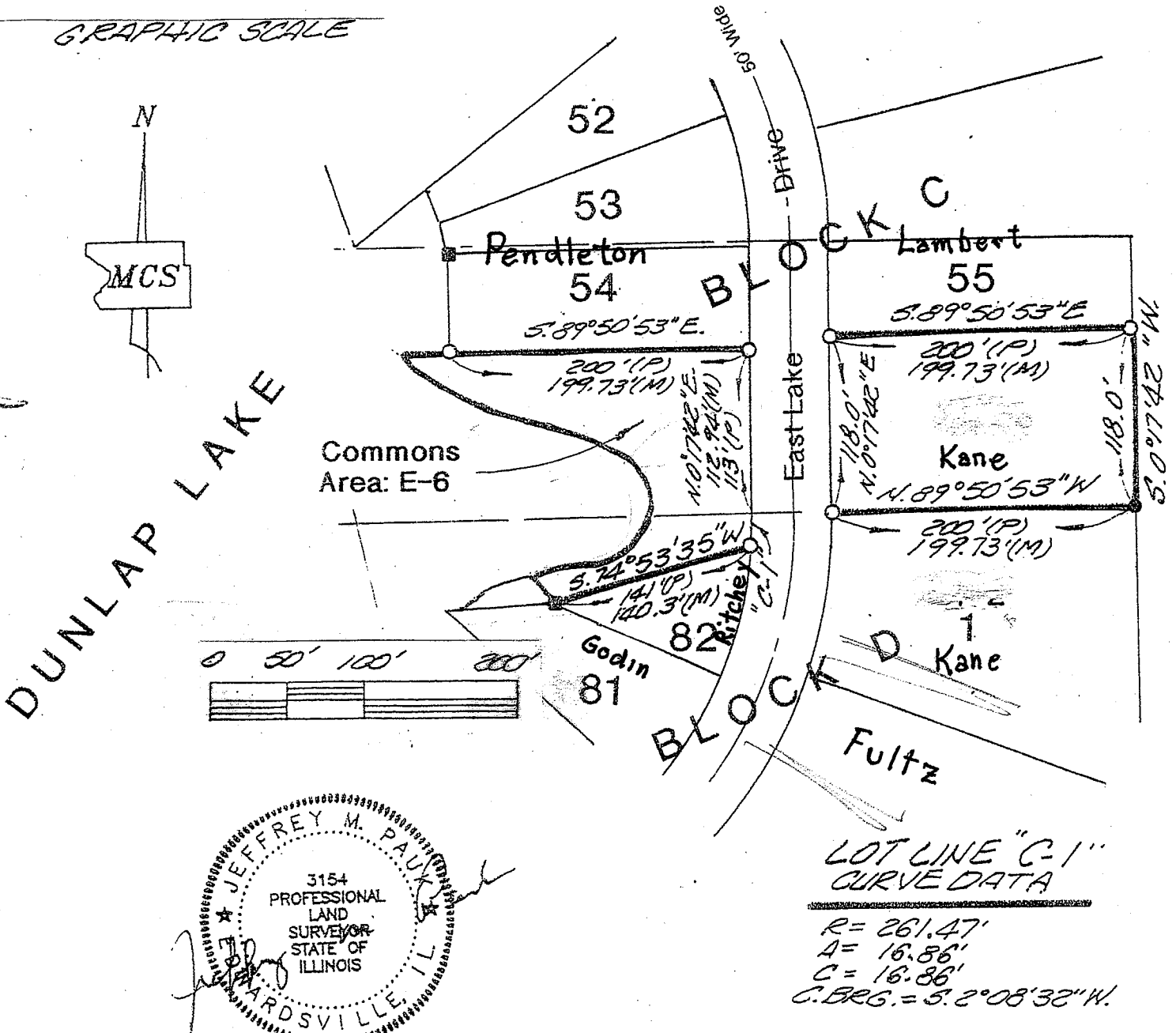
DN BY JW
 EX BY JMP
 JOB NO.
 02184

Part of "Blocks C & D" of "Dunlap Lake Subdivision"

(As recorded in P.Bk.21/P.72)

in the N.W.1/4 of Sec.18-Twp.4 N.-R.7 W. of the 3rd P.M.,
Madison County, IL

Known as 'Commons Area E-6'



BASIS OF BEARINGS: Grid North, Illinois State Plane Coordinate System, West Zone, from astronomic observation

Madison County Surveyors

140A North Main Street
Edwardsville, IL 62025
(618) 692-4414
Fax (618) 692-4404

EXHIBIT "A"

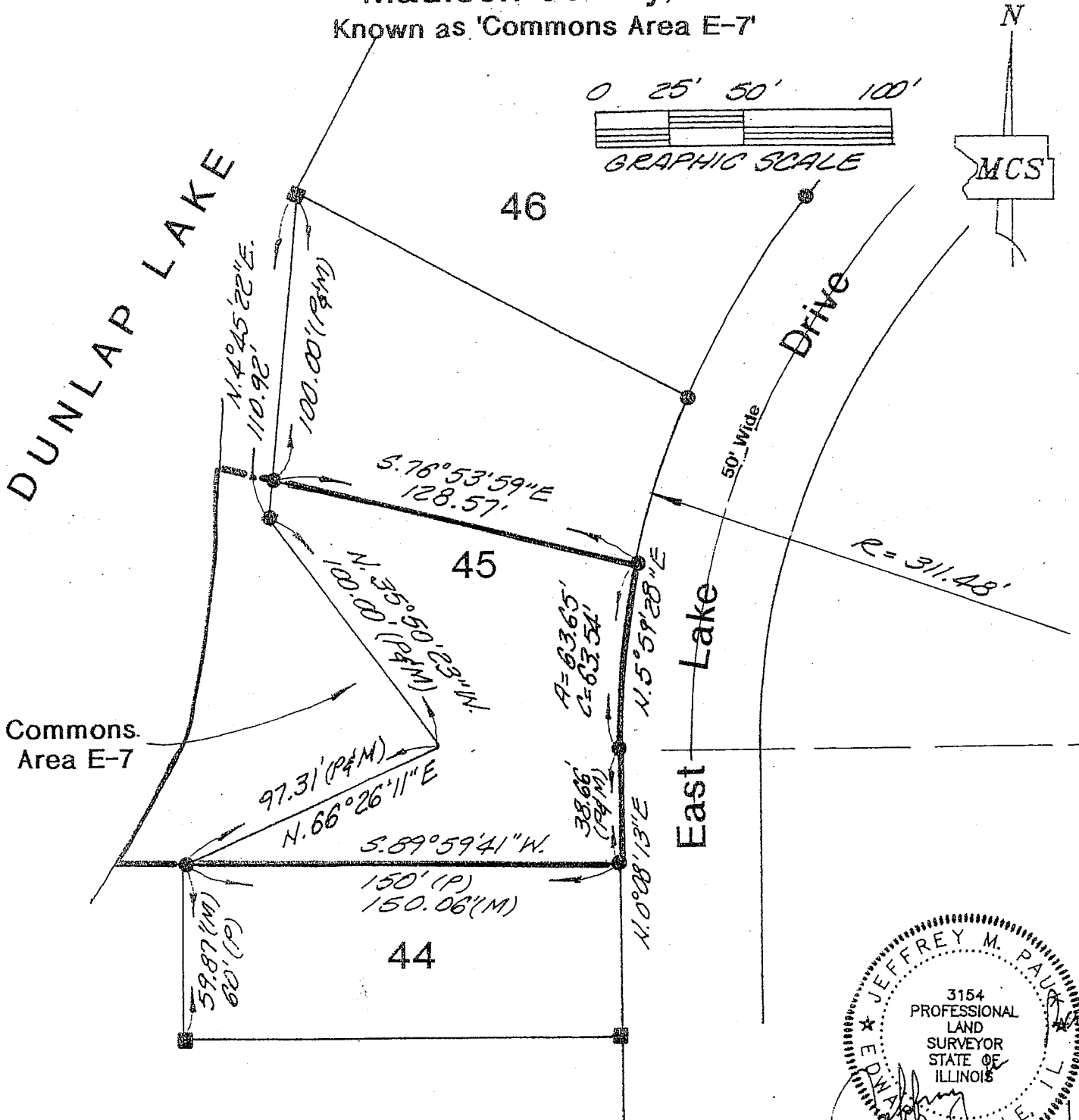
Dunlap Lake Property Owners Association
1409 Gerber Road
Edwardsville, IL 62025

DN. BY JW

GX BY JMP

JOB NO:
02184

Part of Lot 45 of "Block D" of "Dunlap Lake Subdivision"
 (As recorded in P.Bk.21/P.72)
 in the S.E.1/4 of Sec.13-Twp.4 N.-R.8 W. of the 3rd P.M.,
 Madison County, IL
 Known as 'Commons Area E-7'



BASIS OF BEARINGS: Grid North, Illinois State Plane Coordinate System, West Zone, from astronomic observation

Madison County Surveyors

140A North Main Street
 Edwardsville, IL 62025
 (618) 692-4414
 Fax (618) 692-4404

EXHIBIT "A"

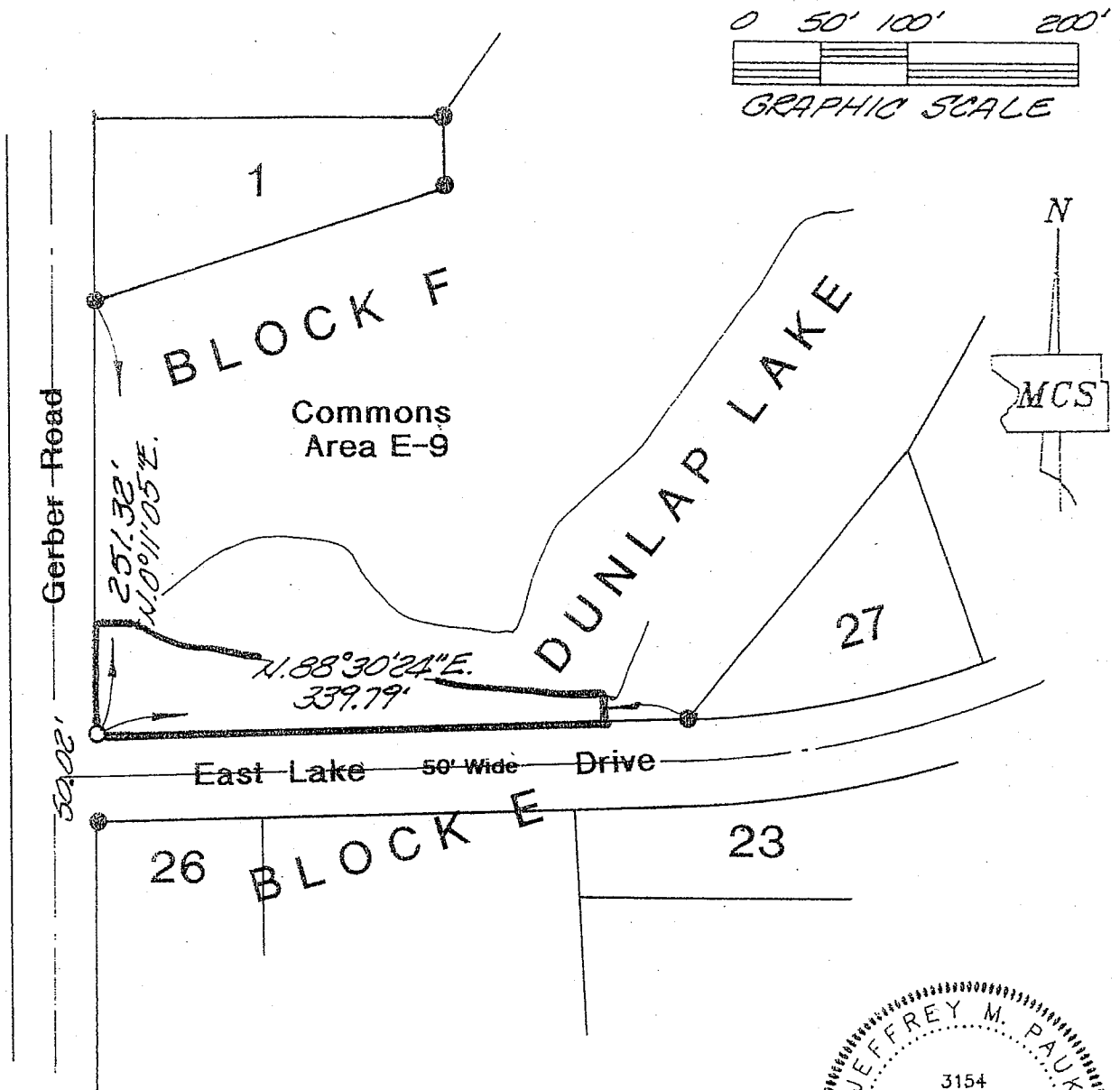
Dunlap Lake Property Owners Association
 1409 Gerber Road
 Edwardsville, IL 62025

DN BY JW
 SK BY JMP
 JOB NO:
 02184

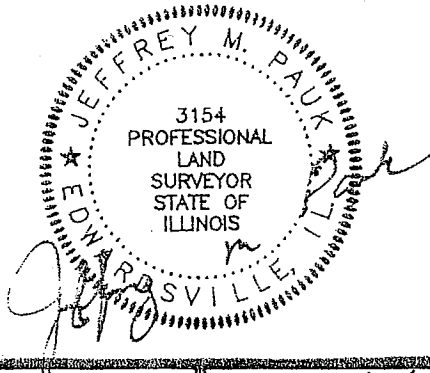
Part of "Blocks E & F" of "Dunlap Lake Subdivision"

(As recorded in P.Bk.21/P.72)

in the S.E.1/4 of Sec.13-Twp.4 N.-R.8 W. of the 3rd P.M.,
 Madison County, IL
 Known as 'Commons Area E-9'



BASIS OF BEARINGS: Grid North, Illinois State Plane
 Coordinate System, West Zone, from astronomic observation



Madison County Surveyors

140A North Main Street
 Edwardsville, IL 62025
 (618) 692-4414
 Fax (618) 692-4404

EXHIBIT "A"

Dunlap Lake Property Owners Association
 1409 Gerber Road
 Edwardsville, IL 62025

DN. BY: JMW
 GX. BY: JMP
 JOB NO: 02184