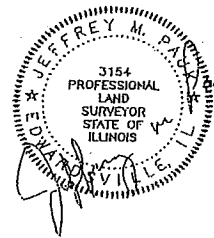
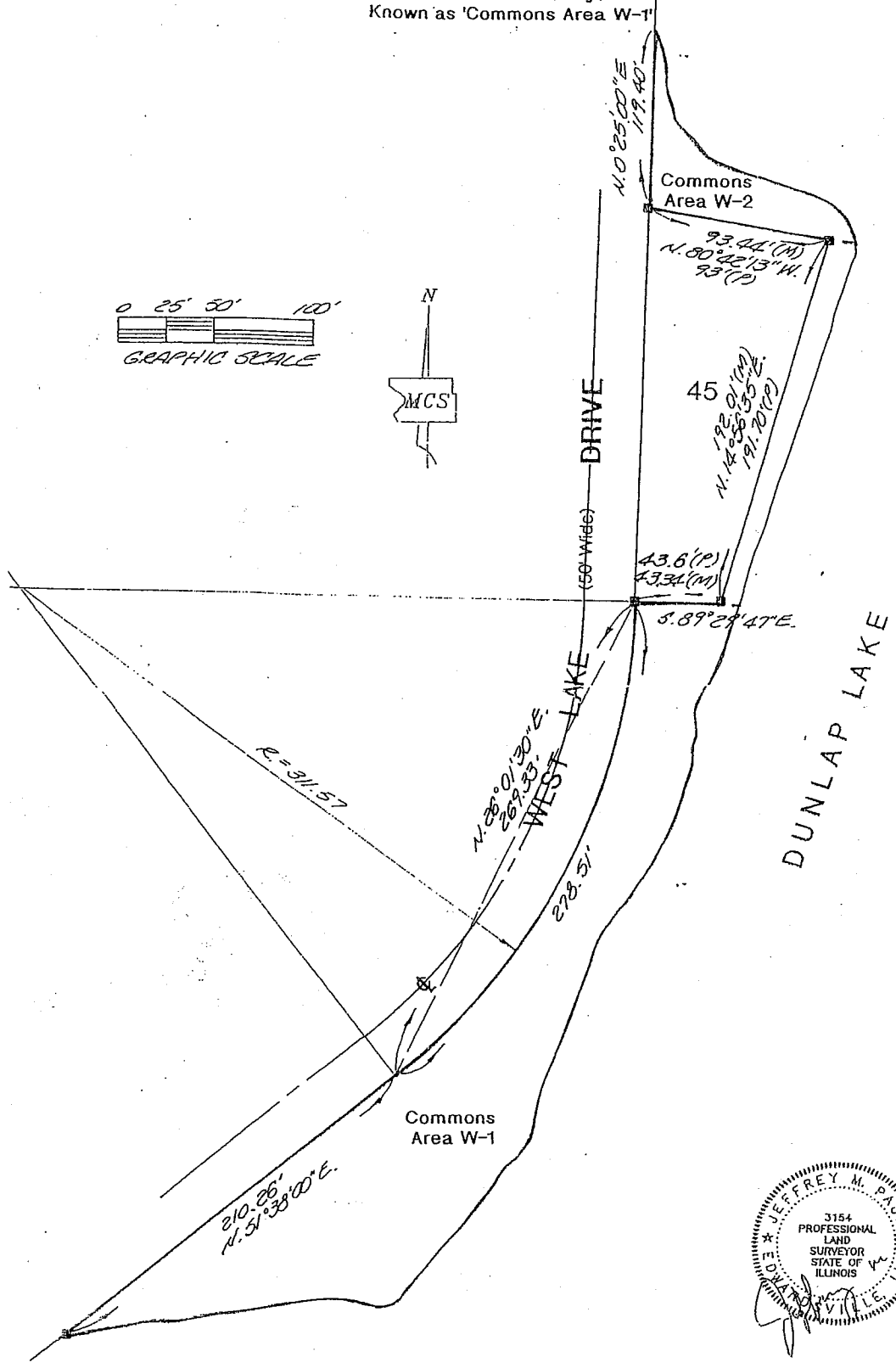
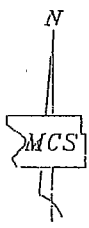
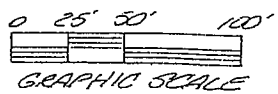


Part of "Block F" of "Dunlap Lake Subdivision"
 (As recorded in P.Bk.21/P.88)
 in the East 1/2 of Sec.13-Twp.4 N.-R.8 W. of the 3rd P.M.,
 Madison County, IL
 Known as 'Commons Area W-1'



Madison County Surveyors
 140A North Main Street
 Edwardsville, IL 62025
 (618) 692-4414
 Fax (618) 692-4404

EXHIBIT "A"
 Dunlap Lake Property
 Owners Association
 1409 Gerber Road
 Edwardsville, IL 62025

DN BY JH
 CK BY JMP
 JOB NO.
 02037

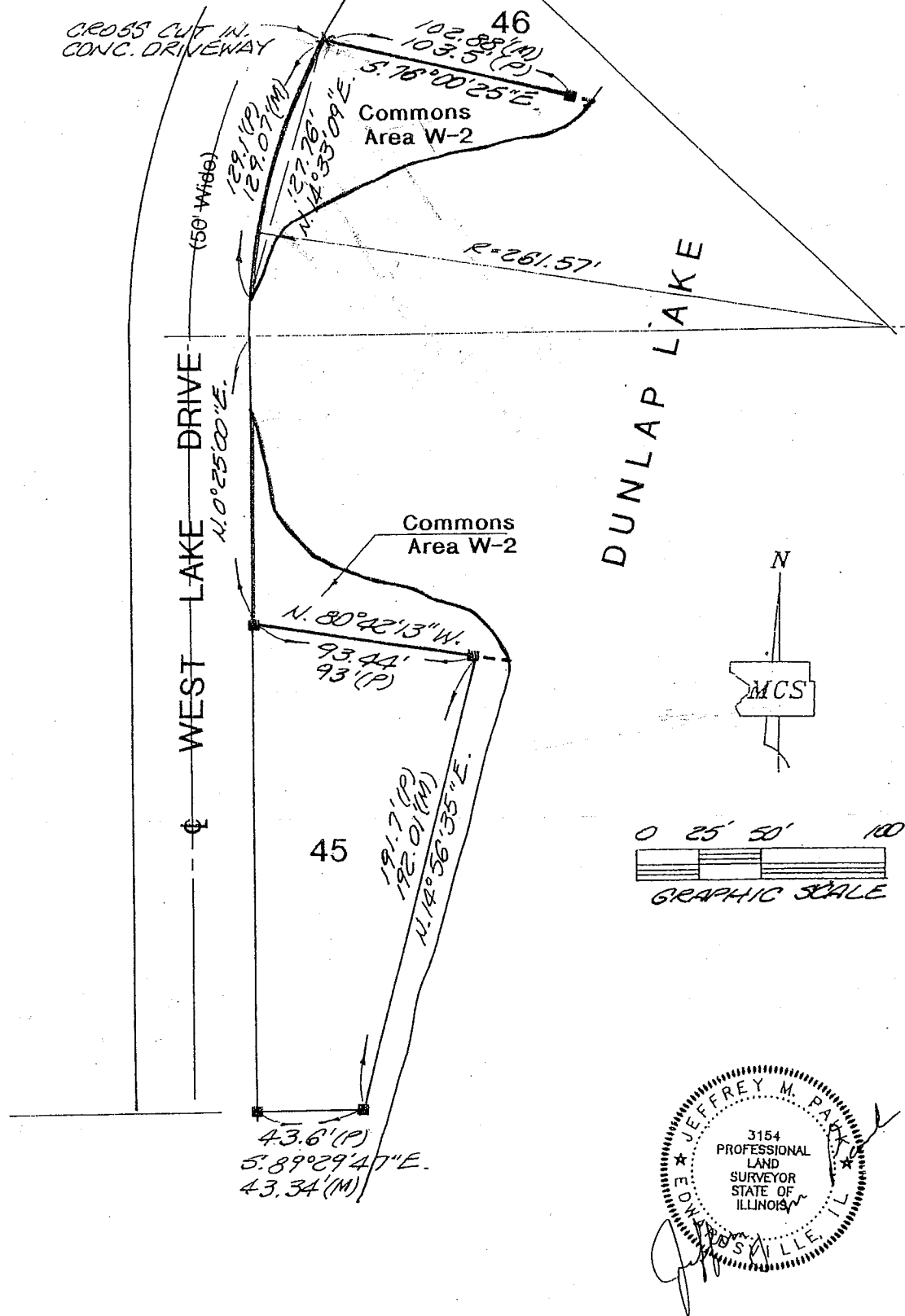
Part of "Block F" of "Dunlap Lake Subdivision"

(As recorded in P.Bk.21/P.86)

in the East 1/2 of Sec.13-Twp.4 N.-R.8 W. of the 3rd P.M.,

Madison County, IL

Known as 'Commons Area W-2'



Madison County Surveyors
140A North Main Street
Edwardsville, IL 62025
(618) 692-4414
Fax (618) 692-4404

EXHIBIT "A"

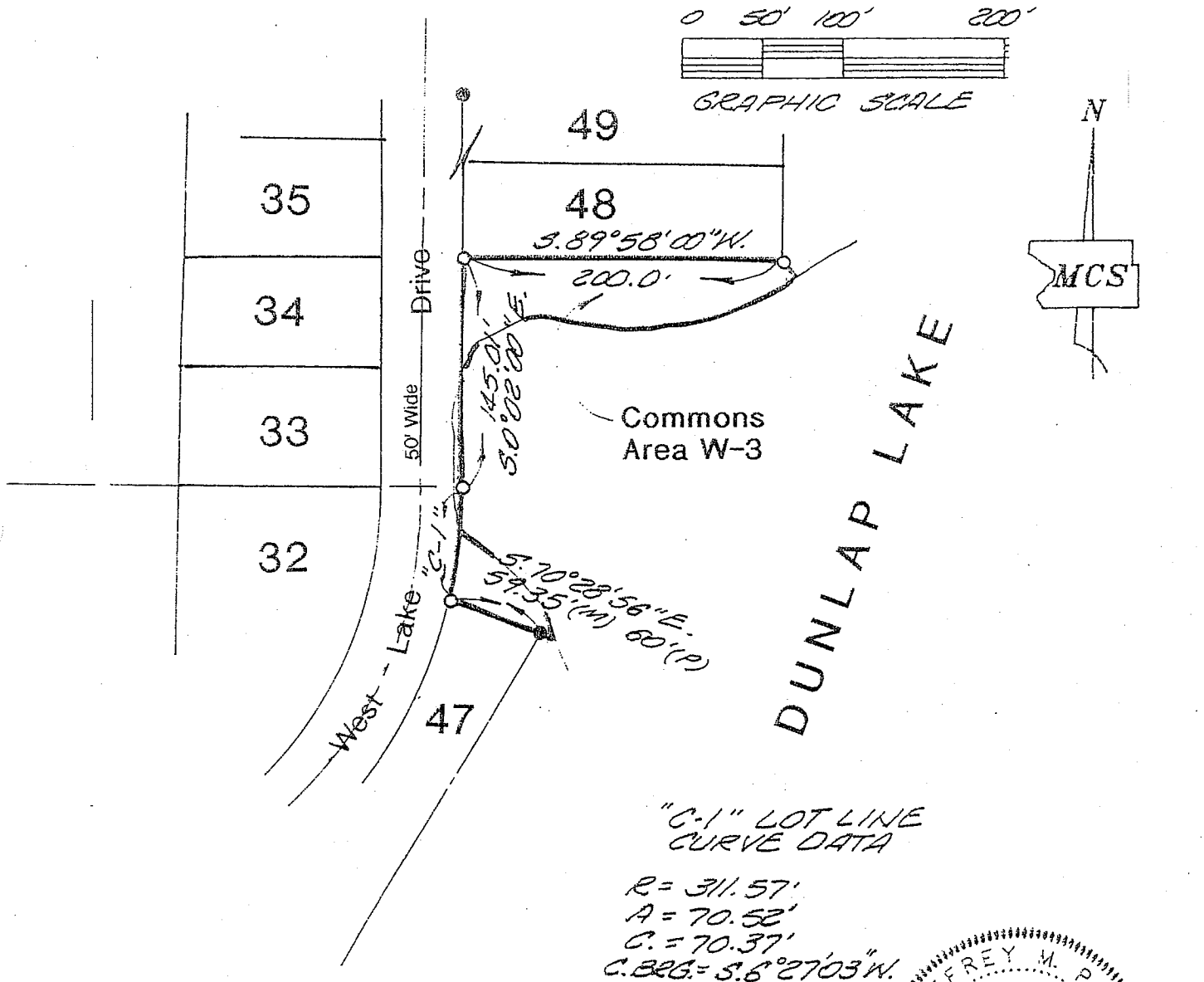
Dunlap Lake Property
Owners Association
1409 Gerber Road
Edwardsville, IL 62025

DN BY: JMW
CK BY: JMP
JOB NO:
02037

Part of "Block F" of "Dunlap Lake Subdivision"

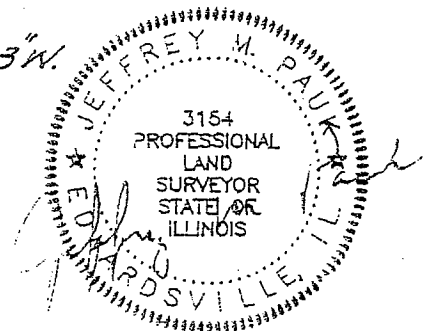
(As recorded in P.Bk.21/P.86)

in the N.E.1/4 of Sec.13-Twp.4 N.-R.8 W. of the 3rd P.M.,
Madison County, IL
Known as 'Commons Area W-3'



"C-1" LOT LINE
CURVE DATA

$R = 311.57'$
 $A = 70.52'$
 $C = 70.37'$
 $C.BEG = S.6^{\circ}27'03" W.$



BASIS OF BEARINGS: Grid North, Illinois State Plane Coordinate System, West Zone, from astronomic observation

Madison County Surveyors

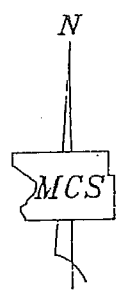
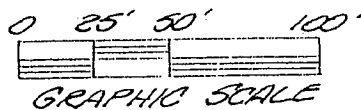
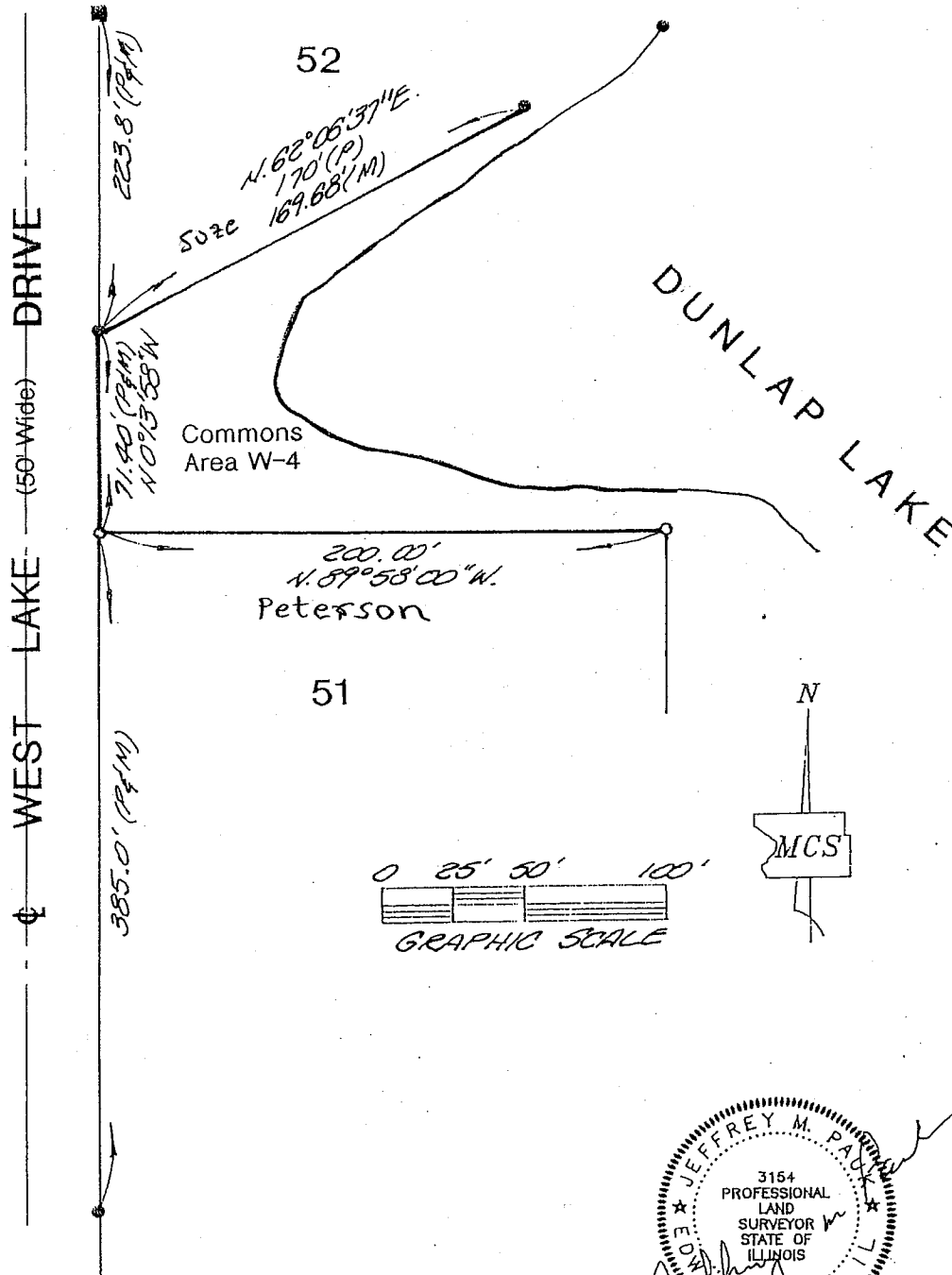
140A North Main Street
Edwardsville, IL 62025
(618) 692-4414
Fax (618) 692-4404

EXHIBIT "A"

Dunlap Lake Property Owners Association
1409 Gerber Road
Edwardsville, IL 62025

DN. BY JW
CX BY JMP
JOB NO:
02148

Part of "Block F" of "Dunlap Lake Subdivision"
 (As recorded in P.Bk.21/P.86)
 in the East 1/2 of Sec.13-Twp.4 N.-R.8 W. of the 3rd P.M.,
 Madison County, IL
 Known as 'Commons Area W-4'



3154
 PROFESSIONAL
 LAND
 SURVEYOR
 STATE OF
 ILLINOIS
 EDWARDSVILLE, IL

Madison County Surveyors
 140A North Main Street
 Edwardsville, IL 62025
 (618) 692-4414
 Fax (618) 692-4404

EXHIBIT "A"

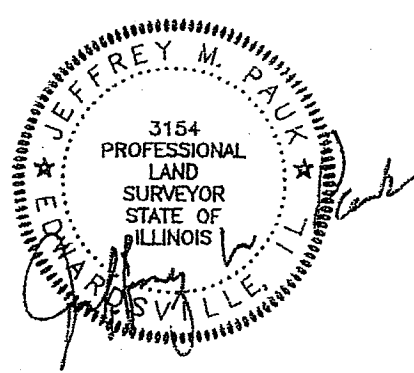
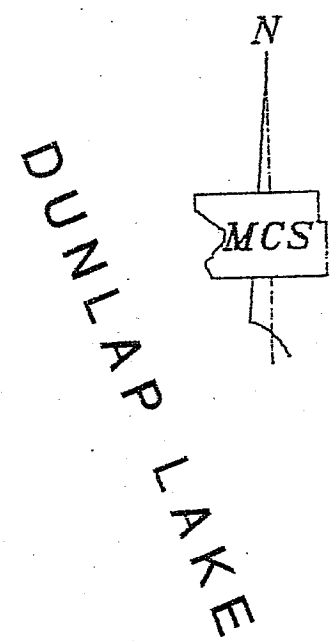
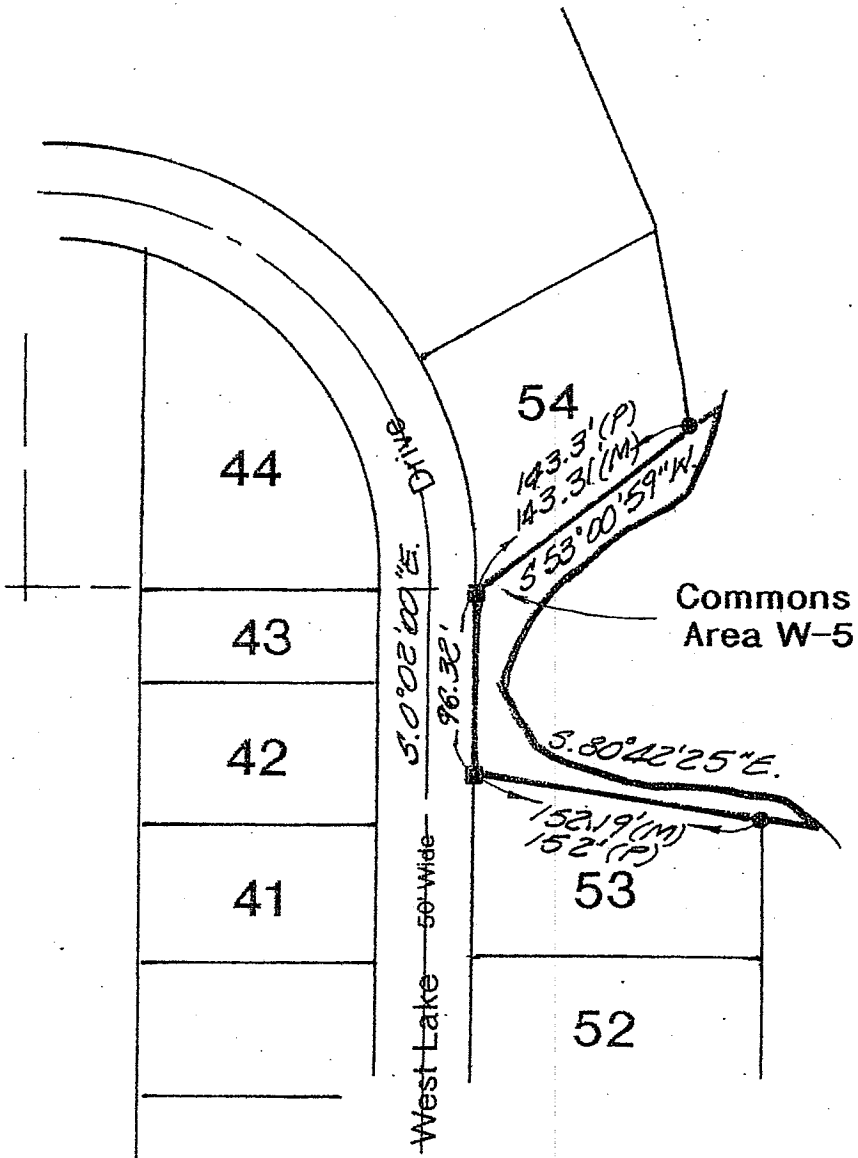
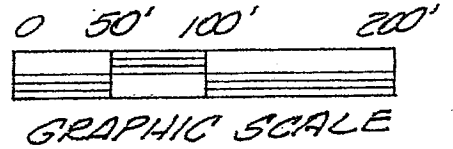
Dunlap Lake Property
 Owners Association
 1409 Gerber Road
 Edwardsville, IL 62025

DN. BY: *JW*
 CK. BY: *JMP*
 JOB NO:
 02037

Part of "Block F" of "Dunlap Lake Subdivision"

(As recorded in P.Bk.21/P.86)

in the N.E.1/4 of Sec.13-Twp.4 N.-R.8 W. of the 3rd P.M.,
Madison County, IL
Known as 'Commons Area W-5'



BASIS OF BEARINGS: Grid North, Illinois State Plane Coordinate System, West Zone, from astronomic observation

Madison County Surveyors

140A North Main Street
Edwardsville, IL 62025
(618) 692-4414
Fax (618) 692-4404

EXHIBIT "A"

Dunlap Lake Property Owners Association
1409 Gerber Road
Edwardsville, IL 62025

DN. BY: JW

CK. BY: JMP

JOB NO:

02184

W6

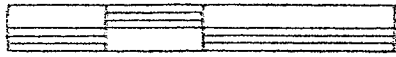
Part of "Block F" of "Dunlap Lake Subdivision"

(As recorded in P.Bk.21/P.86)

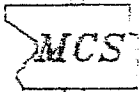
in the N.E.1/4 of Sec.13-Twp.4 N.-R.8 W. of the 3rd P.M.,
Madison County, IL
Known as 'Commons Area W-6'

N

0 50' 100' 200'



GRAPHIC SCALE

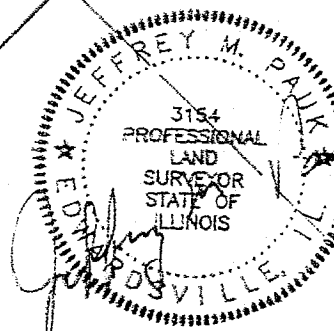


DUNLAP LAKE

Commons Area W-6

5.43°39'54"W
50' Wide Drive

568.38'
West Lake



"C-1" LOT LINE
CURVE DATA

R = 311.57'
A = 25.00'
C = 24.99'
C.BRG. = 5.45°57'49"W.

76

87

87.00'±
20.00'±
N. 05.00'± W.

BASIS OF BEARINGS: Grid North, Illinois State Plane
Coordinate System, West Zone, from astronomic observation

Madison County Surveyors

140A North Main Street
Edwardsville, IL 62025
(618) 692-4414
Fax (618) 692-4404

EXHIBIT "A"

Dunlap Lake Property Owners Association
1409 Gerber Road
Edwardsville, IL 62025

DN. BY J.W.
CX BY JMP
JOB NO:
02184